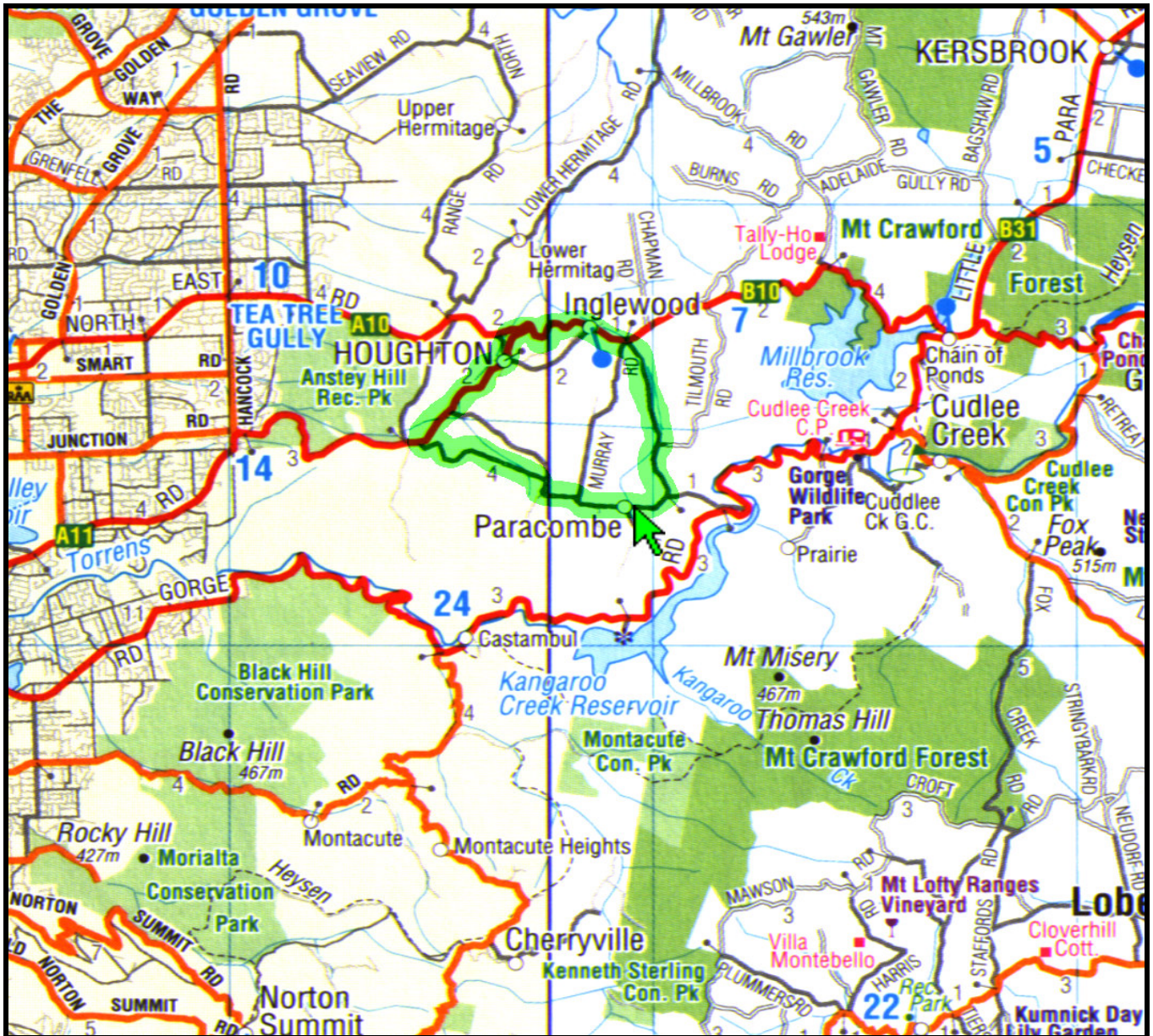


## The PACC mapping project: Paracombe



### Paracombe

A mildly challenging course well suited for the all around strong rider. Undulating terrain and four short sharp climbs along the southern reach of the course test competitors fitness. The S bends through Houghton are technically challenging but manageable. An uphill sprint finish demands peak strength and good tactics to achieve victory. Road surface is fine for both wet and dry racing conditions.

Approx. 35 mins travel time from Adelaide GPO.