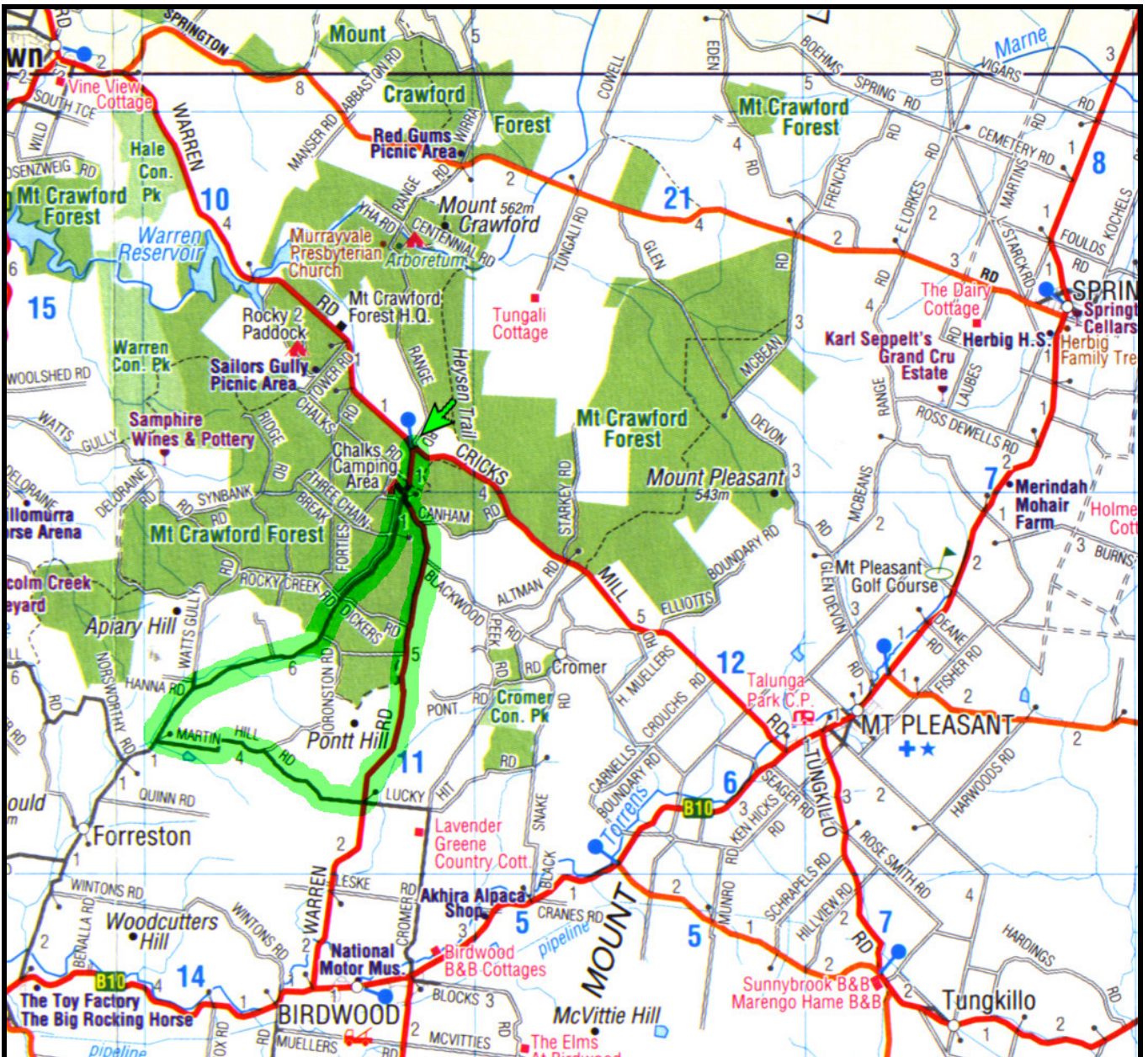


The PACC mapping project: Mt Crawford (Martins Hill)



Mt. Crawford—Martins Hill Circuit.

At around 16km per lap this is a challenging loop due to the steepness of the hills across the back of the course. Not particularly long, they are steep enough to allow climbers some advantage over sprinters, however long flat finishing straight is well suited to the speedier riders.

The complexity of the terrain rewards the adventurous competitor willing to make an effort to drop weaker riders. Sheltering within the Mt. Crawford forest reduces most winds to gentle breezes, although inopportune directions can turn the road ways into tree lined wind tunnels.

Approx. 1hr 10 mins travel time from Adelaide GPO.